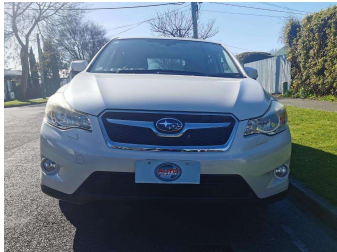


2013 Subaru XV HYBRID 2.0I-L AWD



Purchase Price

\$13,590

Includes GST
Excludes on-road costs of \$400

Finance may be available on this vehicle. Ask one of our friendly staff for more information.

Gain peace of mind with Mechanical Breakdown Insurance. **Ask us how.**

Top features

- » AA Odometer Certified
- » Adaptive Radar Cruise...
- » Air Bag(s)
- » Air Conditioning
- » All Electrics
- » All Wheel Drive
- » Alloy Wheels
- » Auto headlights
- » CD Player
- » Central Locking
- » Chain-driven Engine
- » Climate Control
- » Digital Display
- » Electric Mirrors
- » Electric Seats
- » Electric Windows
- » Fog Lights
- » Forward Collision Miti...

Body Style

5 door, Hatchback

Odometer

96,020 km

Engine

2000 cc, Internal Combustion

Fuel Type

Hybrid

Transmission

Auto, 4WD

Wheels

-

VIN

7AT0GF09X23009724

Interior

Black, Cloth

Safety



Based on 2024 UCSR rating for 12-16 models

Reg No.

-

Ext Colour

Pearl White

History

Ex-Overseas

Seats

5 seats

CO2 Emissions

★★★★★☆☆

137 grams/km

Energy Economy

★★★★☆☆☆☆

**Annual fuel cost of \$2,310
5.9L per 100km**

Cost per year is an estimate based on petrol price of \$2.80 per litre and an average distance of 14000 km. Emissions and Energy Economy figures standardised to 3P WLTP.

Stock ID: 5628



Auto Depot | Phone 0800 001 198 | Email sales@autodepot.co.nz
432 - 434 St Asaph Street, Phillipstown, Christchurch 8011, New Zealand
www.autodepot.co.nz



★★★★★
4.78 | 606 reviews