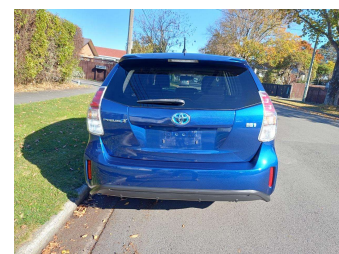
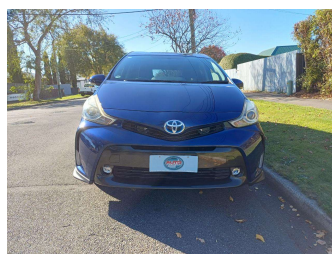
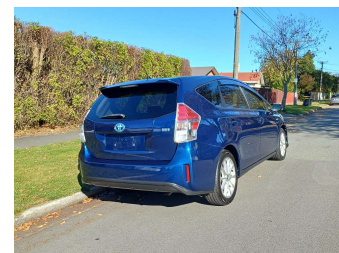
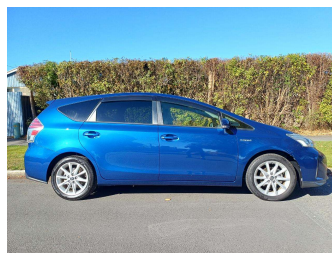


2016 Toyota Prius ALPHA S



Purchase Price

\$16,590

Includes GST
Excludes on-road costs of \$400

Finance may be available on this vehicle. Ask one of our friendly staff for more information.

Gain peace of mind with Mechanical Breakdown Insurance. **Ask us how.**

Top features

- » 8 Air Bags
- » AA Odometer Certified
- » Air Conditioning
- » Alloy Wheels
- » Auto headlights
- » Bluetooth Handfree
- » Chain-driven Engine
- » Climate Control
- » Electric Mirrors
- » Electric Windows
- » Immobiliser
- » ISOFIX for childseat
- » Push Button Start
- » Reverse Camera
- » Side and Curtain Airba...
- » Smart Key
- » Tinted Windows
- » VINZ Certified

Body Style

5 door, Station Wagon

Odometer

95,925 km

Engine

1800 cc, Hybrid

Fuel Type

Hybrid

Transmission

Auto, 2WD

Wheels

-

VIN

7AT0H637X26038430

Interior

Black

Safety



Based on 2025 UCSR rating for 12-21 models

Reg No.

-

Ext Colour

Blue

History

Ex-Overseas

Seats

5 seats

CO2 Emissions

★★★★☆

111 grams/km

Energy Economy

★★★★☆☆

**Annual fuel cost of \$1,840
4.7L per 100km**

Cost per year is an estimate based on petrol price of \$2.80 per litre and an average distance of 14000 km. Emissions and Energy Economy figures standardised to 3P WLTP.

Stock ID: 6384



Auto Depot | Phone 0800 001 198 | Email sales@autodepot.co.nz
432 - 434 St Asaph Street, Phillipstown, Christchurch 8011, New Zealand
www.autodepot.co.nz



★★★★★
4.78 | 707 reviews