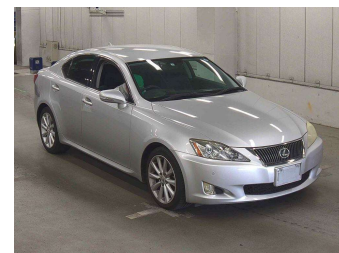
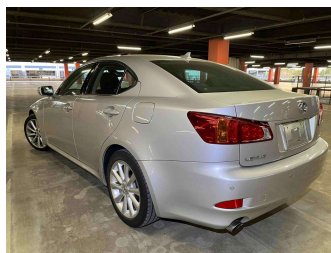


# 2009 Lexus IS 250 V6 Sports



**Purchase Price** **\$11,590**

Includes GST  
Excludes on-road costs of \$400

Finance may be available on this vehicle. Ask one of our friendly staff for more information.

Gain peace of mind with Mechanical Breakdown Insurance. **Ask us how.**

- Top features**
- » 10 Air Bags
  - » AA Odometer Certified
  - » Air Conditioning
  - » All Electrics
  - » Alloy Wheels
  - » Auto headlights
  - » Auto rain wipers
  - » AUX-IN
  - » Bluetooth Handfree
  - » CD Player
  - » Central Locking
  - » Chain-driven Engine
  - » Climate Control
  - » Cruise Control
  - » Digital Display
  - » Electric Mirrors
  - » Electric Seats
  - » Electric Windows

**Body Style**  
**4 door, Sedan**

**Odometer**  
**53,220 km**

**Engine**  
**2500 cc, Internal Combustion**

**Fuel Type**  
**Petrol**

**Transmission**  
**Auto, 2WD**

**Wheels**  
-

**VIN**  
-

**Interior**  
**Black, Cloth**

**Safety**  
-

**Reg No.**  
-

**Ext Colour**  
**Silver**

**History**  
**Ex-Overseas**

**Seats**  
**5 seats**

**CO2 Emissions**  
-

**Energy Economy**  
-

**Stock ID: 5896**



Auto Depot | Phone 0800 001 198 | Email sales@autodepot.co.nz  
432 - 434 St Asaph Street, Phillipstown, Christchurch 8011, New Zealand  
www.autodepot.co.nz



4.76 | 515 reviews