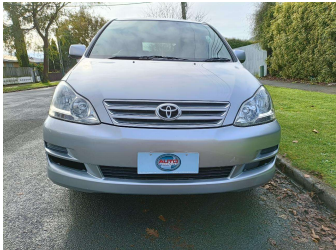


2005 Toyota Ipsum 4WD 240S



Purchase Price

\$5,590

Includes GST
Excludes on-road costs of \$400

Finance may be available on this vehicle. Ask one of our friendly staff for more information.

Gain peace of mind with Mechanical Breakdown Insurance. **Ask us how.**

Top features

- » 4WD on demand
- » Air Bag(s)
- » Air Conditioning
- » Alloy Wheels
- » CD Player
- » Chain-driven Engine
- » Climate Control
- » Electric Mirrors
- » Electric Windows
- » HID Headlights
- » Power Steering
- » Remote Locking
- » Spoiler
- » Tinted Windows
- » VVT-i Engine

Body Style

5 door, Station Wagon

Odometer

160,960 km

Engine

2400 cc, Internal Combustion

Fuel Type

Petrol

Transmission

Auto, 4WD

Wheels

-

VIN

7AT0H633X12012869

Interior

Beige

Safety



Based on 2024 VSRR rating

Reg No.

HBN912

Ext Colour

Silver

History

Ex-Overseas, 1 owner

Seats

7 seats

CO2 Emissions

★ ★ ☆ ☆ ☆ ☆

244 grams/km

Energy Economy

★ ☆ ☆ ☆ ☆ ☆

Annual fuel cost of \$4,000
10.2L per 100km

Cost per year is an estimate based on petrol price of \$2.80 per litre and an average distance of 14000 km. Emissions and Energy Economy figures standardised to 3P WLTP.

Stock ID: 6161



Auto Depot | Phone 0800 001 198 | Email sales@autodepot.co.nz
432 - 434 St Asaph Street, Phillipstown, Christchurch 8011, New Zealand
www.autodepot.co.nz



★★★★★
4.78 | 621 reviews