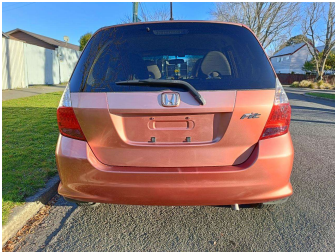
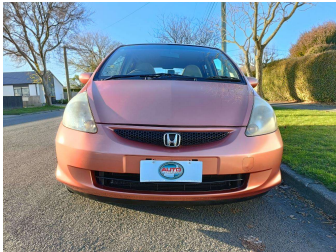
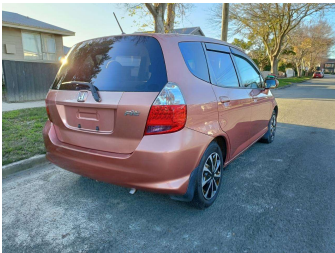
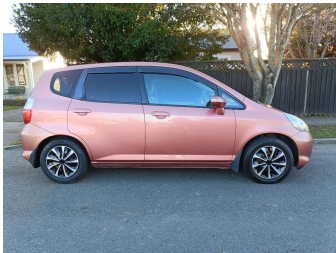


# 2004 Honda Fit 1.3S



### Purchase Price

**\$4,990**

Includes GST  
Excludes on-road costs of \$400

Finance may be available on this vehicle. Ask one of our friendly staff for more information.

Gain peace of mind with Mechanical Breakdown Insurance. **Ask us how.**

### Top features

- » AA Odometer Certified
- » Air Bag(s)
- » Air Conditioning
- » All Electrics
- » AUX-IN
- » CD Player
- » Central Locking
- » Climate Control
- » Digital Display
- » Electric Mirrors
- » Electric Windows
- » Fog Lights
- » Immobiliser
- » Power Steering
- » Push Button Start
- » Remote Locking

### Body Style

**5 door, Hatchback**

### Odometer

**124,100 km**

### Engine

**1330 cc, Internal Combustion**

### Fuel Type

**Petrol**

### Transmission

**Auto, 2WD**

### Wheels

-

### VIN

**7AT08G2YX18141134**

### Interior

**Black**

### Safety



Based on 2024 UCSR rating for 02-08 models

### Reg No.

**LED459**

### Ext Colour

**Burnt Orange**

### History

**Ex-Overseas**

### Seats

**5 seats**

### CO2 Emissions

★★★★☆

**136 grams/km**

### Energy Economy

★★★★☆☆

**Annual fuel cost of \$2,230  
5.7L per 100km**

Cost per year is an estimate based on petrol price of \$2.80 per litre and an average distance of 14000 km. Emissions and Energy Economy figures standardised to 3P WLTP.

**Stock ID: 6202**



Auto Depot | Phone 0800 001 198 | Email [sales@autodepot.co.nz](mailto:sales@autodepot.co.nz)  
432 - 434 St Asaph Street, Phillipstown, Christchurch 8011, New Zealand  
[www.autodepot.co.nz](http://www.autodepot.co.nz)



★★★★★  
4.78 | 629 reviews