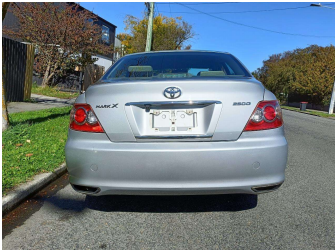
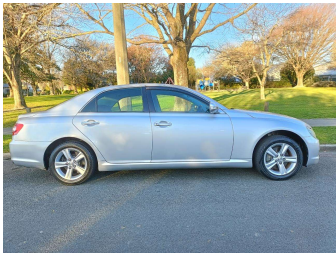


2009 Toyota Mark-X 250G S PACKAGE



Purchase Price

\$7,990

Includes GST
Excludes on-road costs of \$400

Finance may be available on this vehicle. Ask one of our friendly staff for more information.

Gain peace of mind with Mechanical Breakdown Insurance. **Ask us how.**

Top features

- » AA Odometer Certified
- » Air Bag(s)
- » Air Conditioning
- » Auto headlights
- » AUX-IN
- » CD Player
- » Chain-driven Engine
- » Climate Control
- » Digital Display
- » Electric Mirrors
- » Electric Windows
- » Fog Lights
- » HID Headlights
- » ISOFIX for childseat
- » Power Steering
- » Remote Locking
- » V6 Power

Body Style

4 door, Sedan

Odometer

113,300 km

Engine

2500 cc, Internal Combustion

Fuel Type

Petrol

Transmission

Auto, Rear Wheel

Wheels

-

VIN

7AT0H64TX18073938

Interior

Black

Safety



Based on 2024 VSRR rating

Reg No.

LTE222

Ext Colour

Silver

History

Ex-Overseas, 5 owners

Seats

5 seats

CO2 Emissions

★★★★☆☆

217 grams/km

Energy Economy

★★★★☆☆

**Annual fuel cost of \$3,530
9L per 100km**

Cost per year is an estimate based on petrol price of \$2.80 per litre and an average distance of 14000 km. Emissions and Energy Economy figures standardised to 3P WLTP.

Stock ID: 6207



Auto Depot | Phone 0800 001 198 | Email sales@autodepot.co.nz
432 - 434 St Asaph Street, Phillipstown, Christchurch 8011, New Zealand
www.autodepot.co.nz



★★★★★
4.78 | 629 reviews