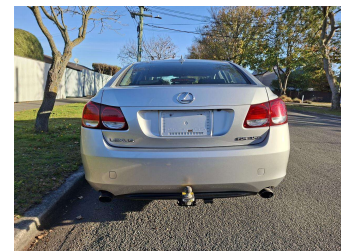
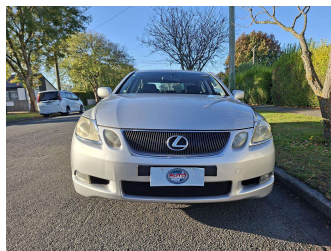
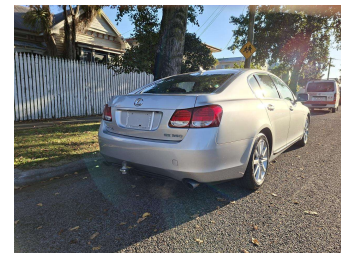


# 2006 Lexus GS350 V6



Purchase Price

**\$7,990**

Includes GST  
Excludes on-road costs of \$400

Finance may be available on this vehicle. Ask one of our friendly staff for more information.

Gain peace of mind with Mechanical Breakdown Insurance. **Ask us how.**

## Top features

- » 18' Factory Alloys
- » 9 Air Bags
- » Adaptive Front Light S...
- » Auto headlights
- » Auto rain wipers
- » Chain-driven Engine
- » Climate Control
- » Cruise Control
- » Electric Adjustable Lu...
- » Electric Adjustable St...
- » Electric Seats
- » HID Headlights
- » Immobiliser
- » ISOFIX for childseat
- » Push Button Start
- » Reverse Camera
- » Side and Curtain Airba...
- » Smart Key

Body Style

**4 door, Sedan**

Odometer

**188,210 km**

Engine

**3500 cc, Internal Combustion**

Fuel Type

**Petrol**

Transmission

**Auto, Rear Wheel**

Wheels

-

VIN

**7AT0B00RX20005977**

Interior

**Black**

Safety



Based on 2025 VSRR rating

Reg No.

**NDE336**

Ext Colour

**Silver**

History

**Ex-Overseas, 3 owners**

Seats

**5 seats**

CO2 Emissions

★☆☆☆☆

**264 grams/km**

Energy Economy

★☆☆☆☆

**Annual fuel cost of \$4,310  
11L per 100km**

Cost per year is an estimate based on petrol price of \$2.80 per litre and an average distance of 14000 km. Emissions and Energy Economy figures standardised to 3P WLTP.

**Stock ID: 6379**



Auto Depot | Phone 0800 001 198 | Email sales@autodepot.co.nz  
432 - 434 St Asaph Street, Phillipstown, Christchurch 8011, New Zealand  
www.autodepot.co.nz

