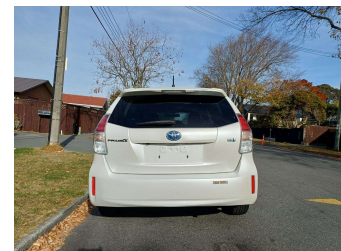
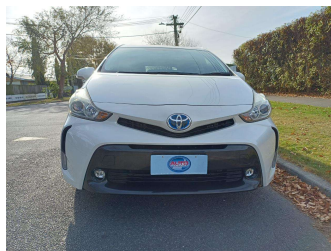
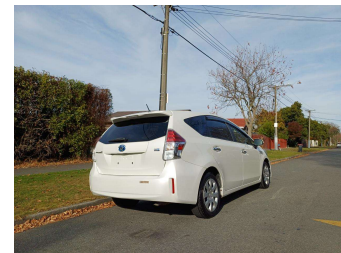


2015 Toyota Prius ALPHA S



Purchase Price **\$15,990**

Includes GST
Excludes on-road costs of \$400

Finance may be available on this vehicle. Ask one of our friendly staff for more information.

Gain peace of mind with Mechanical Breakdown Insurance. **Ask us how.**

- Top features**
- » 8 Air Bags
 - » AA Odometer Certified
 - » Air Conditioning
 - » Auto headlights
 - » Bluetooth Handfree
 - » Central Locking
 - » Chain-driven Engine
 - » Climate Control
 - » Electric Mirrors
 - » Electric Windows
 - » HID Headlights
 - » Immobiliser
 - » ISOFIX for childseat
 - » Push Button Start
 - » Remote Locking
 - » Reverse Camera
 - » Side and Curtain Airba...
 - » Smart Key

Body Style
5 door, Station Wagon

Odometer
118,978 km

Engine
1800 cc, Hybrid

Fuel Type
Hybrid

Transmission
Auto, 2WD

Wheels
-

VIN
7AT0H637X26401798

Interior
Black

Safety



Based on 2025 UCSR rating for 12-21 models

Reg No.

-

Ext Colour
Pearl White

History
Ex-Overseas

Seats
5 seats

CO2 Emissions
★★★★☆
111 grams/km

Energy Economy
★★★★☆☆

**Annual fuel cost of \$1,840
4.7L per 100km**

Cost per year is an estimate based on petrol price of \$2.80 per litre and an average distance of 14000 km. Emissions and Energy Economy figures standardised to 3P WLTP.

Stock ID: 6387



Auto Depot | Phone 0800 001 198 | Email sales@autodepot.co.nz
432 - 434 St Asaph Street, Phillipstown, Christchurch 8011, New Zealand
www.autodepot.co.nz

4.78 | 709 reviews