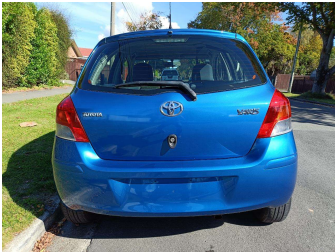
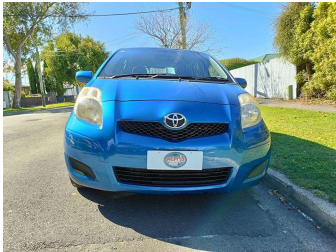
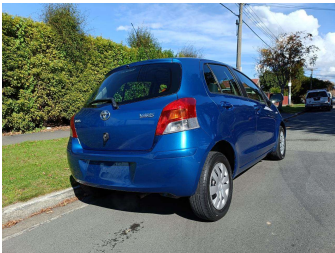


# 2010 Toyota Yaris Vitz 1.3 NZ NEW



### Purchase Price

Includes GST  
Excludes on-road costs of \$400

**\$9,590**

Finance may be available on this vehicle. Ask one of our friendly staff for more information.

Gain peace of mind with Mechanical Breakdown Insurance. **Ask us how.**

### Top features

- » 8 Air Bags
- » Air Conditioning
- » AUX-IN
- » CD Player
- » Chain-driven Engine
- » Electric Mirrors
- » Electric Windows
- » Fog Lights
- » ISOFIX for childseat
- » Power Steering
- » Remote Locking
- » Side and Curtain Airba...
- » Tinted Windows
- » VVT-i Engine

### Body Style

**5 door, Hatchback**

### Odometer

**39,800 km**

### Engine

**1300 cc, Internal Combustion**

### Fuel Type

**Petrol**

### Transmission

**Auto, 2WD**

### Wheels

-

### VIN

**JTDKW963X05138144**

### Interior

**Black**

### Safety



Based on 2024 UCSR rating for 05-11 models

### Reg No.

**FHR549**

### Ext Colour

**Blue**

### History

**NZ New, 1 owner**

### Seats

**5 seats**

### CO2 Emissions

★★★★☆

**173 grams/km**

### Energy Economy

★★★☆☆

**Annual fuel cost of \$2,820  
7.2L per 100km**

Cost per year is an estimate based on petrol price of \$2.80 per litre and an average distance of 14000 km. Emissions and Energy Economy figures standardised to 3P WLTP.

**Stock ID: 6121**



Auto Depot | Phone 0800 001 198 | Email [sales@autodepot.co.nz](mailto:sales@autodepot.co.nz)  
432 - 434 St Asaph Street, Phillipstown, Christchurch 8011, New Zealand  
[www.autodepot.co.nz](http://www.autodepot.co.nz)



★★★★★  
4.78 | 611 reviews